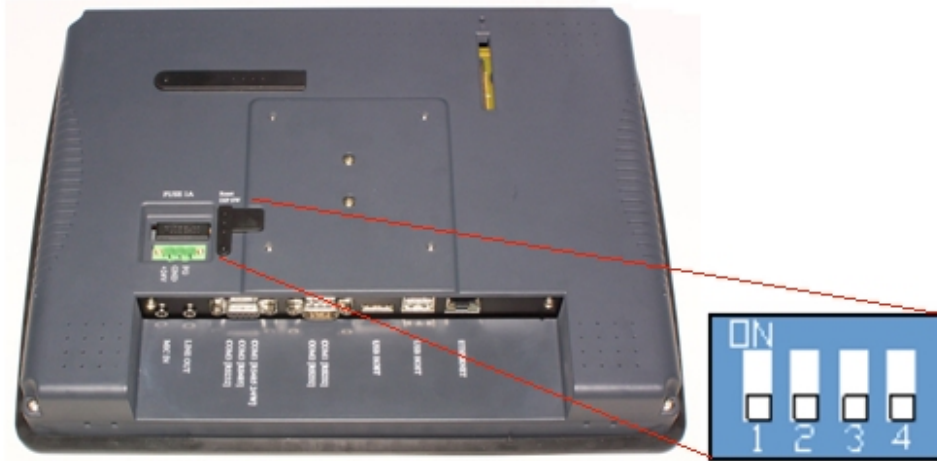


Chapter 4 Hardware Settings

1. Connection interfaces equipped of HMI:



USB Host

Support various devices with USB interface, such as mouse, keyboard, USB stick, printer...etc.

Ethernet Port

Connected devices with Ethernet communication function, such as PLC, laptop...etc; exchange the information via Network.

Compact Flash card

Support the download/ upload of a project, including recipe transfer, Event Log Data...etc.

Serial I/O Port

COM ports, RS-232, RS485-2w/4w, can be connected to PLC or other peripheral devices. Here we view RS-422 the same as RS-485 (4 wire).

In addition, Weintek provides [MT8-COM1 Multi-Connector cable] and [MT8-COM3 Multi-Connector cable] to expand a COM port to multiple independent COM ports so that the efficiency of the operation will be improved.

Besides, please make sure all DIP switches are on “OFF” (down) position (defaults of the display).

2. HMI System Settings

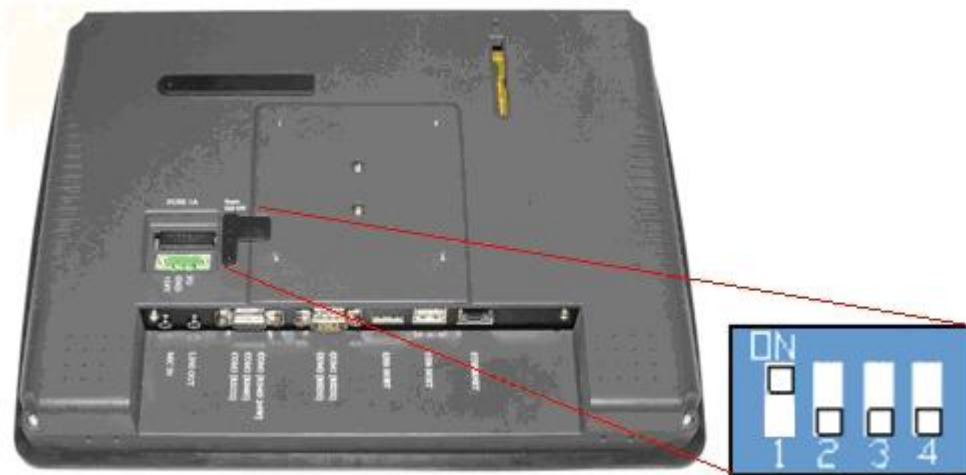
Before operating HMI, user has to complete every system setting. After the setup, use EB80000 editing software to develop a personal operation interface.

The following illustrates every system setting respectively.

System Reset

Each HMI is equipped with a set of reset button and DIP switch. When using DIP switch to change different modes, corresponding functions will be triggered.

If losing or forgetting system passwords, user can set DIP Switch 1 to “ON” position, the rest of DIPs remain “OFF” position and then reboot HMI.

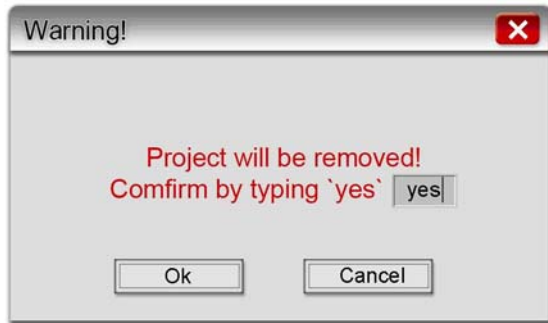


Under this situation, HMI will jump to Touch Adjust (Touch screen calibration) mode. After calibration, the pop-up window appears as the illustration below. User will be inquired if restoring the system password to the default value.



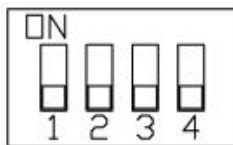
When “YES” is chosen, another pop-up dialog appears as below. User will be confirmed again if restoring the system password to the default value and will be

asked to input “YES”. Then click OK. (The default password is 111111. However, other passwords, including download and upload password, have to be reset.)



Note: The project and saved data in the HMI will all be erased after the reset action is done.

Dip Switch

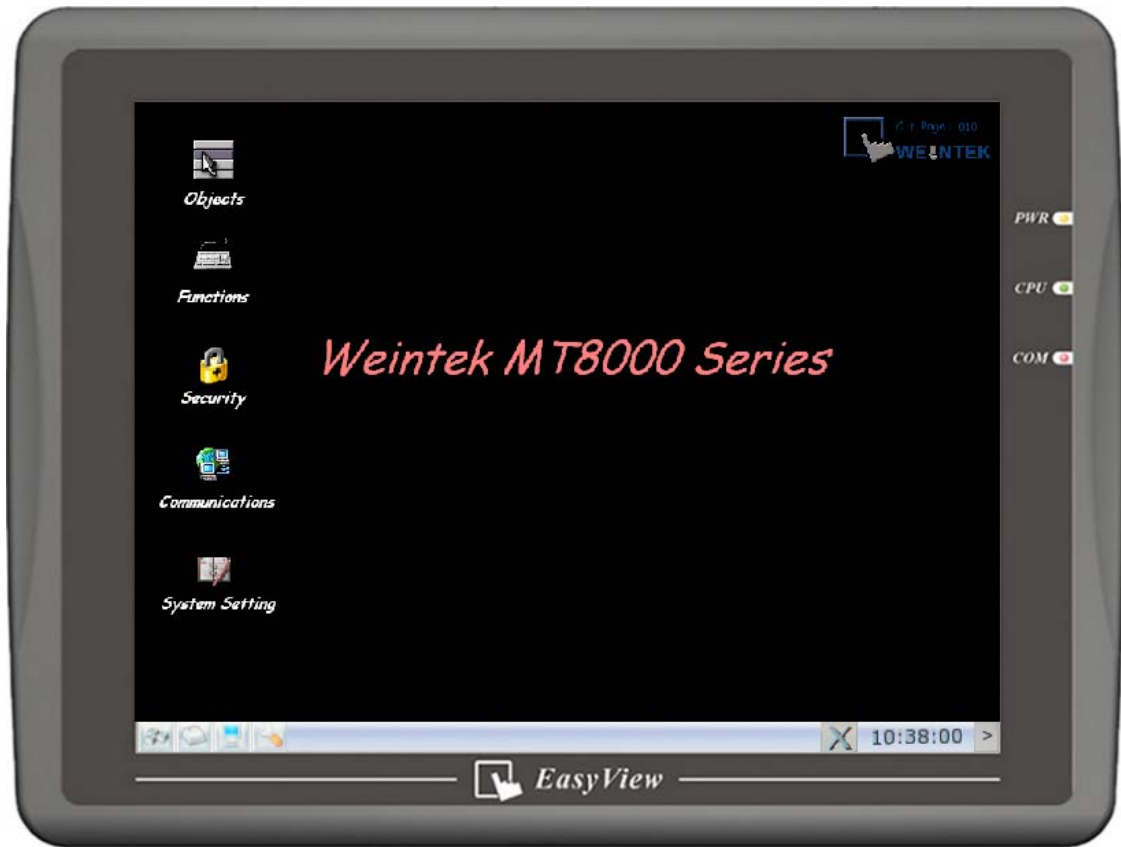


SW1	SW2	SW3	SW4	Mode
ON	OFF	OFF	OFF	Touch Screen Calibrate mode
OFF	ON	OFF	OFF	Reserve
OFF	OFF	ON	OFF	Boot Loader mode
OFF	OFF	OFF	ON	Reserve
OFF	OFF	OFF	OFF	Normal

Tool bar

After activating the HMI, user can set the system by using the mouse to click tool bar at the bottom of the screen. Normally, tool bar is hidden automatically. Only touch the target at the corner of the right-bottom will the tool bar pop up.





1) Large Keyboard

Use large keyboard to input the text information.



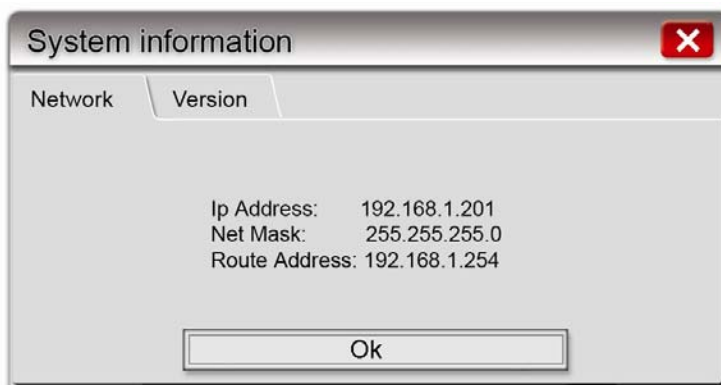
2) Small Keyboard

Use small keyboard to input the numerical information.

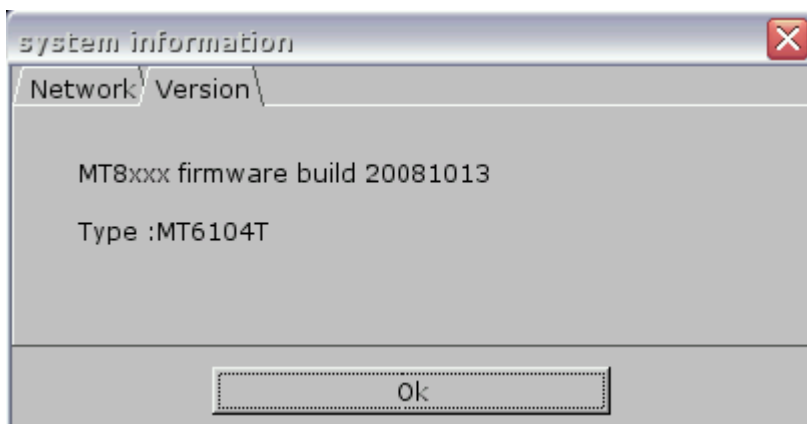


3) System Information

Network: Display Network information, including IP address of HMI and other network information.



Version: Display information of the system version.



4) System Setting

Setting or modify system parameters. Password has to be confirmed in view of security.



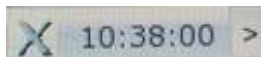
a. Network

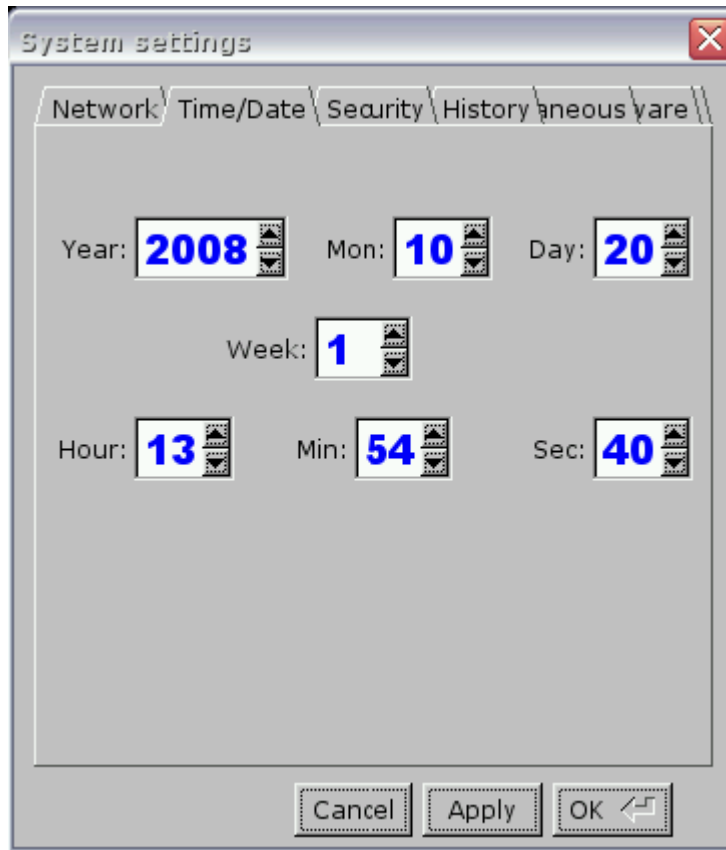
Projects can be downloaded to HMI via Ethernet so that the IP address of operation target (HMI) must be correctly set. If “Auto Get IP Address” is selected, IP address will be automatically assigned from local DHCP network. While if “IP address get from below” is selected, IP address and other network information have to be input.



b. Time/Date

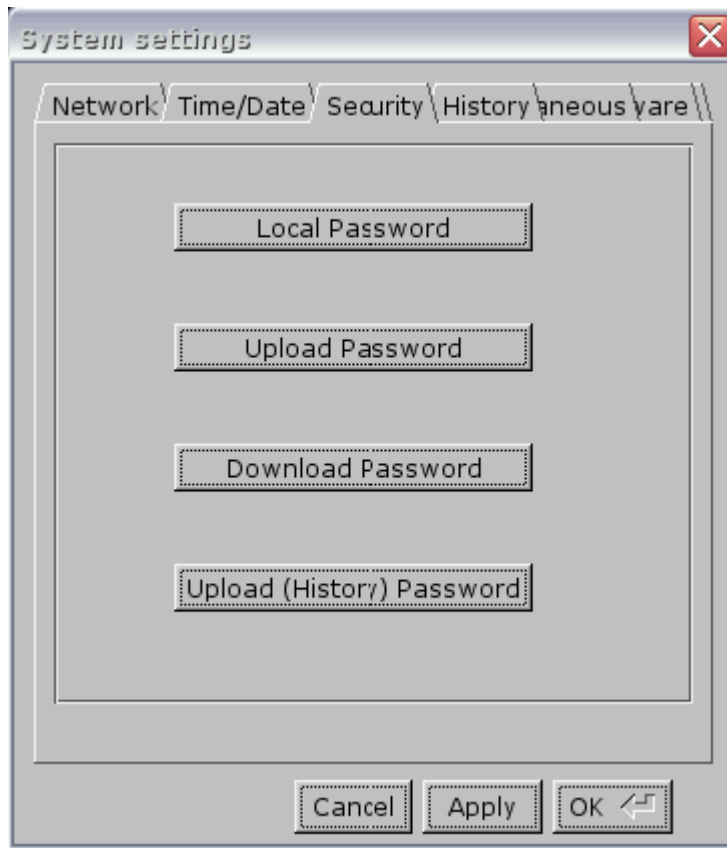
System time/date will display at the corner of the bottom-right after the adjustment.





c. Security

Providing stricter security protection for the HMI. The default of the password is 111111.



Local Password

Password for enter the system

Upload Password

Password for upload the project

Download Password

Password for download the project

Upload (History) Password

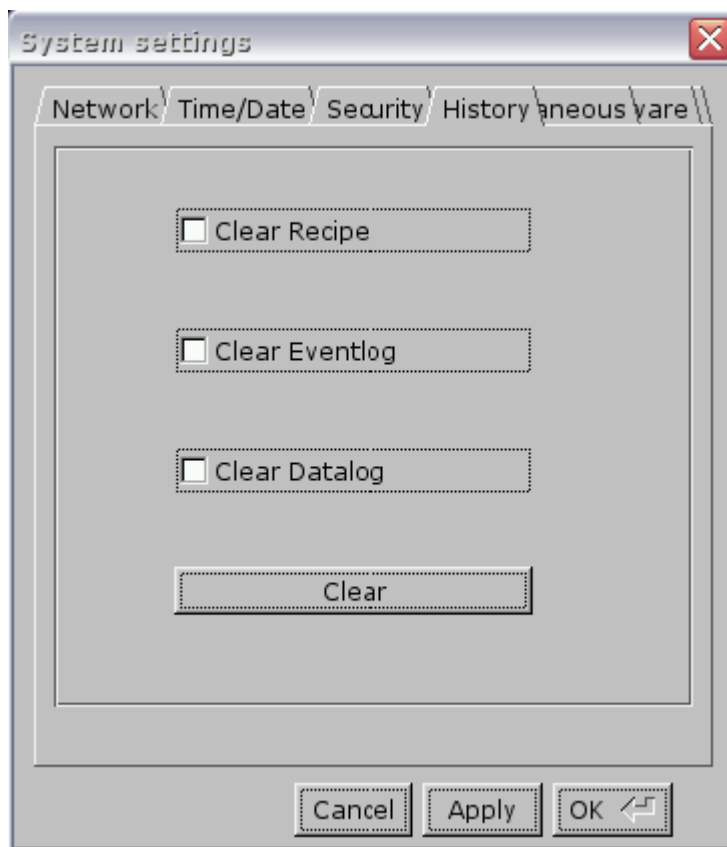
Password for upload the history data

Password confirmation:



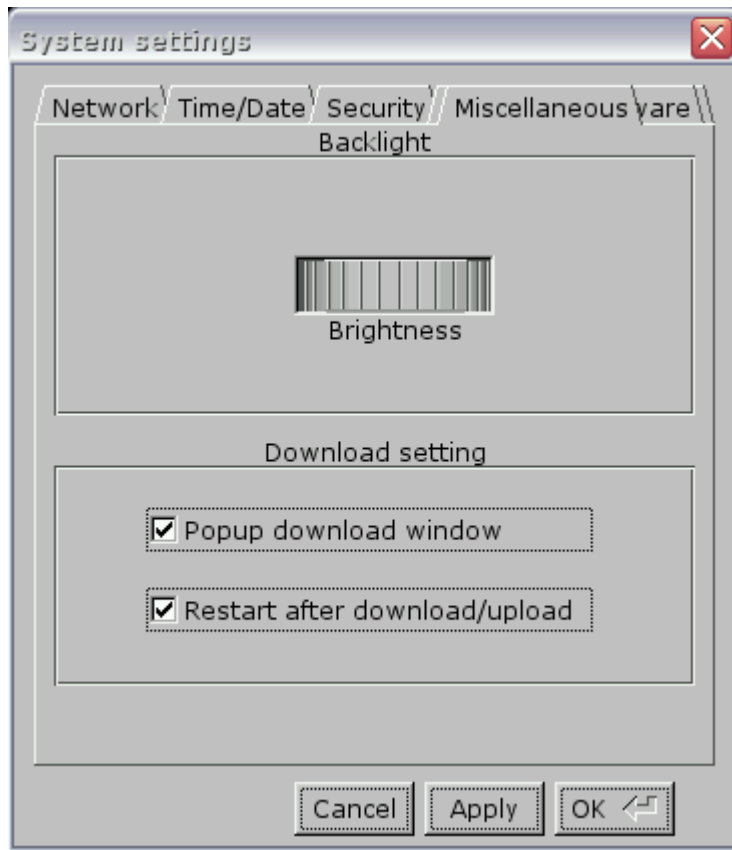
d. History

The tab can clear the historical data in the HMI: Recipe, Event log and Data log.



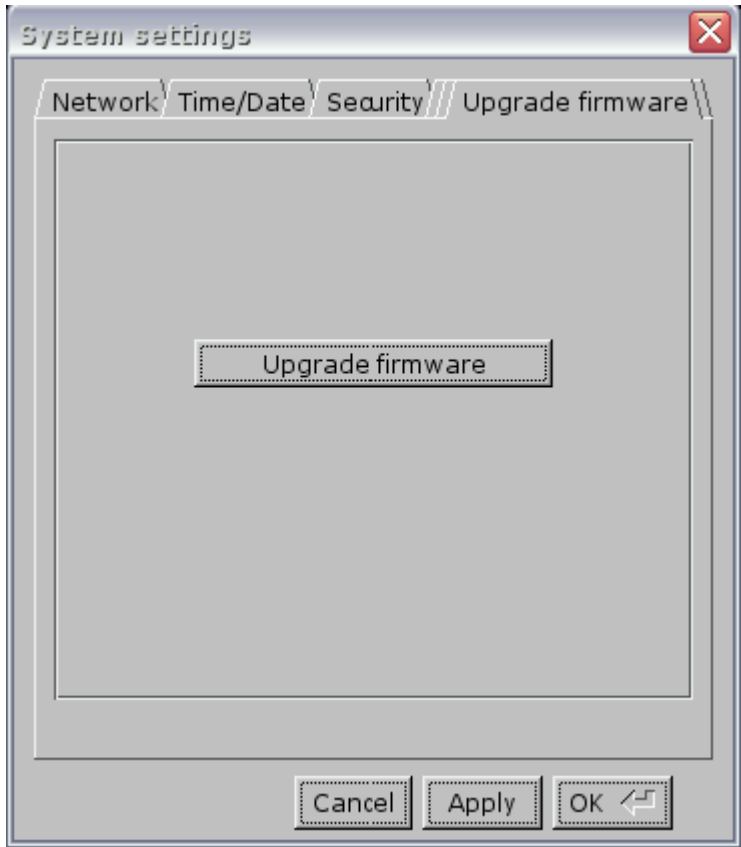
e. Miscellaneous

Using the rolling bottom on the screen to adjust the brightness of LCD.



f. Upgrade firmware

User can update firmware via this function.



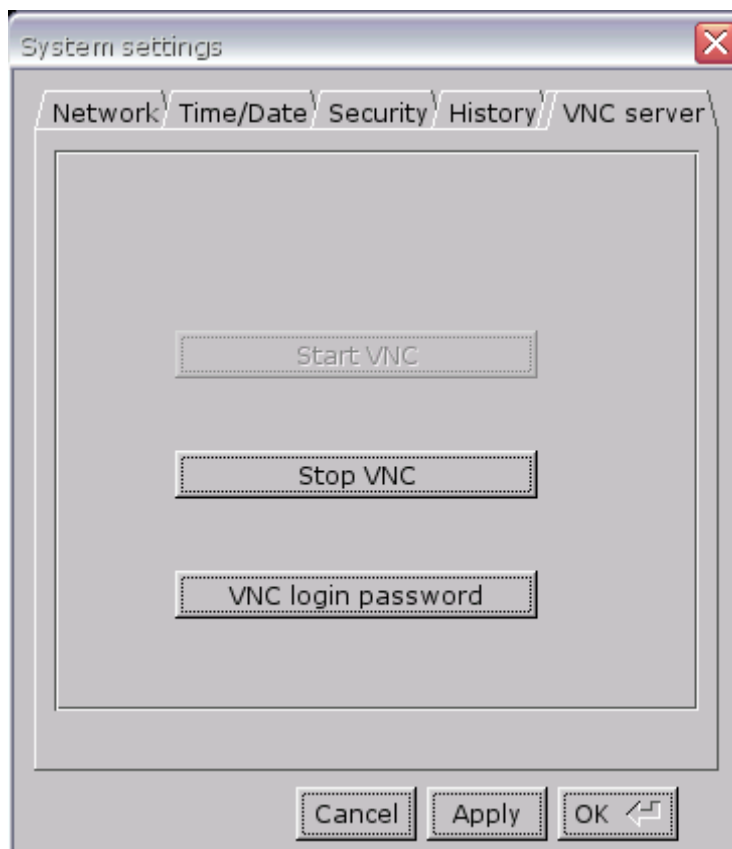
g. CF Card Stat

When HMI detects other new device, this function will be enabled.



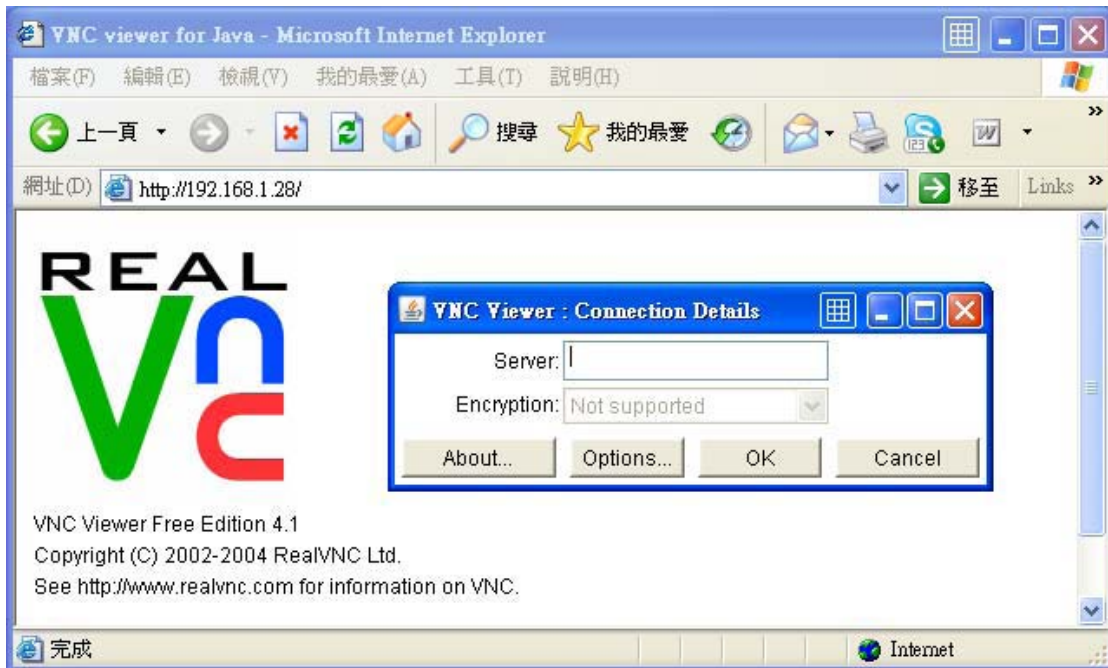
h. VNC server (X series support only)

To monitoring remote HMI

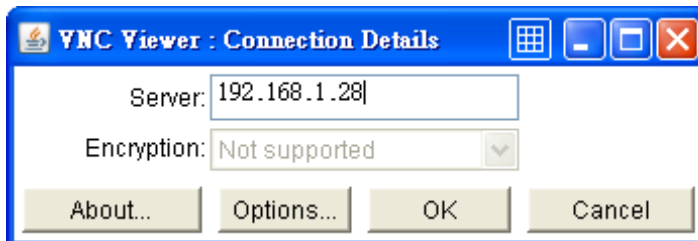


1. Enable VNC server and set password.
2. Install Java for Internet Explorer or install VNC viewer.

For IE, enter HMI IP: <http://192.168.1.28>



For VNC viewer, enter HMI IP address click OK, then enter password.



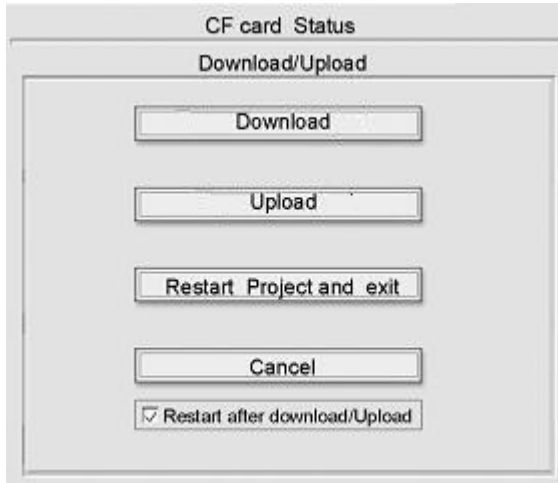


Note:

- (1) Only available for one user to log in to VNC at the same time.
- (2) HMI will reject VNC connection after an hour no operation.

3. HMI Download Setting Screen

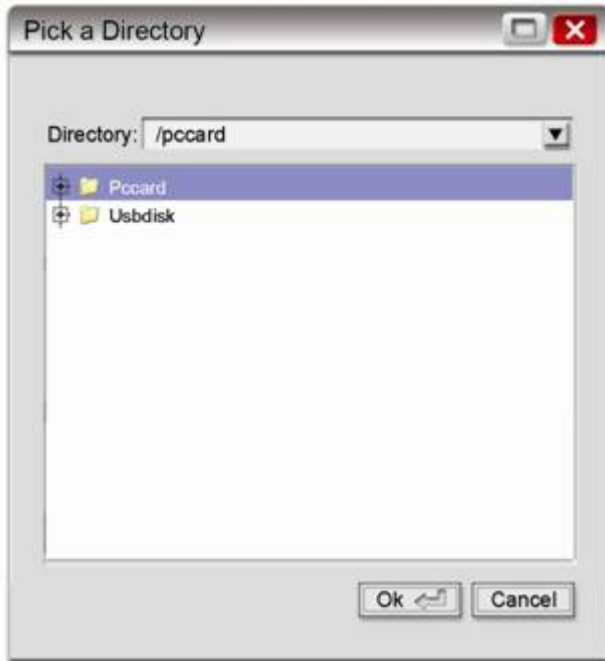
Use CF card or USB stick to download project or data to HMI. After insert CF card or USB stick and assign the directory name, all context under the directory will be downloaded to the HMI. When HMI detects new peripheral devices, the following screen appears:



Several functions can be selected at this time and some need the confirmation of the password. Please refer to the illustration below:



After the confirmation of the password, directory names of the CF card...etc will be displayed. (PCcard: CF Card ; USB disk: USB device)



Select the download path and click OK for downloading.

Note: User must create download data from [Build Download Data for CF/USB Disk] of Project Manager.

Generally speaking, Project Manager divides the downloaded files into two directories:

MT8000

store projects

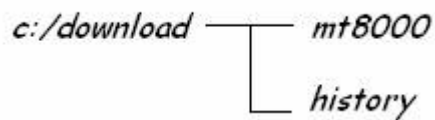
History

the directory will be created when download the historical data.

In other words, if directory of the saved file as below,

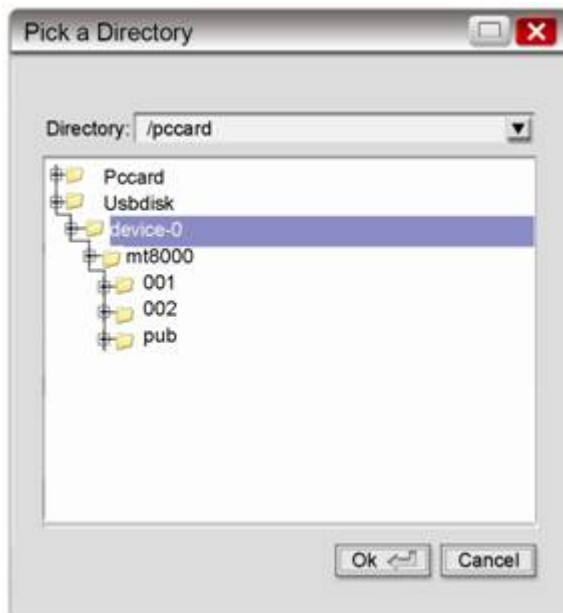


The data structure will as follows:



The most upper path should be selected when downloading. In other words, take the structure above as an example, **download** must be selected but **mt8000** or **history** is invalid.

Take the illustration below as another example, USB disk only saves mt8000 directory but not includes history. In this case, user must choose **device-0** to correctly download the file.



The startup screen appears after a successful new project downloading.

